



Install: Hard-Coated Polycarbonate Windshield

Part Number: S-0111AUA00071N

WORK INSTRUCTION OVERVIEW

⚠ WARNING

- DO NOT ATTEMPT THIS PROCEDURE IF YOU DO NOT HAVE PROPER TOOLS, TRAINING, AND FACILITIES.
- Read and follow all instructions provided when installing this product. Failure to do so may result in placing occupants at risk of serious injury or death.
- To protect bystanders and the service technician(s), shut vehicle off, remove the Ignition Key and secure vehicle to prevent unintended movement.
- Never operate the vehicle in excess of manufacturer's specifications.

NOTICE

- These instructions should be used for installing the ROXOR Windshield alone or with the ROXOR Bikini Top **only**.
- There are different instructions to install the ROXOR Windshield with the ROXOR Hardtop (P/N: S-0101DUA00011N).
- The Soft Cab Enclosure (P/N: S-2302FUA00061N) installation instructions contain the steps necessary to install this ROXOR Windshield with that accessory.
- To clean this windshield, wash gently with mild soap or detergent, using a soft cloth or sponge. Dry with a soft cloth to prevent water spotting.
- Do not use scrub brushes or squeegees on this accessory.

TOOLS REQUIRED

<ul style="list-style-type: none"> 13 mm Socket and Driver T30 Torx bit 	<ul style="list-style-type: none"> Scissors Protective Eye-wear
---	---

TORQUE SPECIFICATION

Tighten each fastener to the torque specification below:

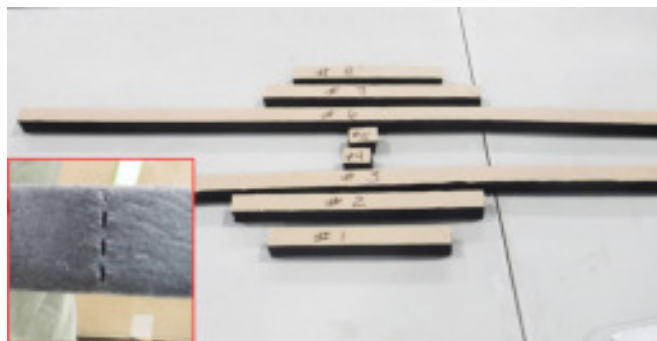
- M6 Screws** – 7.0 N•m (±1)
- M8 Bolts** – 24.5 N•m (±3.5)

KIT COMPONENT TABLE

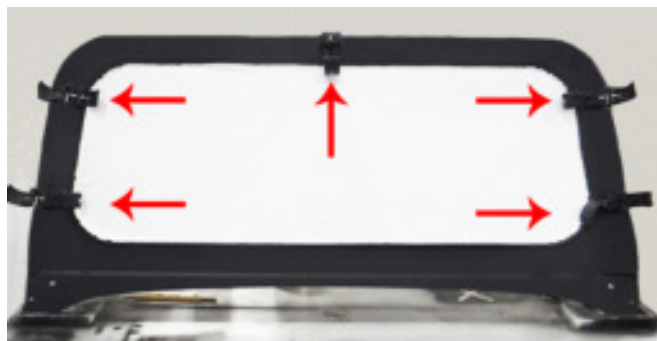
Kit Component	Description	Qty
	Windshield Assembly P/N: S-0111AUA00111N	1
	Roll-Over Protective Structure (ROPS) Adjustable Clamp P/N: S-0000AUA00021N	5
	Foam Seal Material (2) 4' Strips P/N: S-0107AUA00031N	2
	M6 Torx Head Screw P/N: S-0000AUA00061N	5

INSTALLATION PROCEDURE

1. Cut two pieces of foam seal along perforations into length specified.
 - a. # 1 and # 8 to 6.75" (170 mm) ea.
 - b. # 2 and # 7 to 9.50" (240 mm) ea.
 - c. # 3 and # 6 to 29.50" (750 mm) ea.
 - d. # 4 and # 5 to 1.00" (25 mm) ea.



2. Loosely Install (5) ROPS clamps to windshield assembly using (5) M6 torx head screws in positions shown.

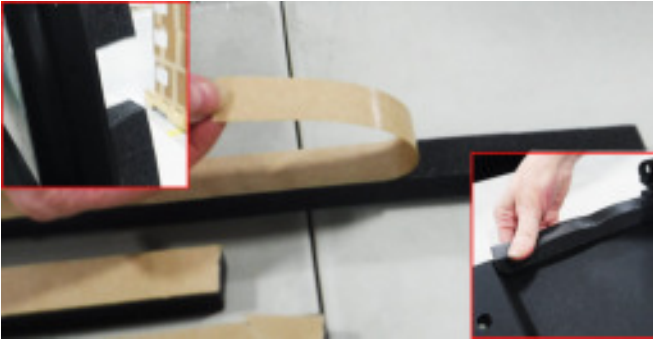




Install: Hard-Coated Polycarbonate Windshield

Part Number: S-0111AUA00071N

3. Install seals to back side of windshield assembly along outer edge of frame. Press down while installing seal to ensure proper adhesion.



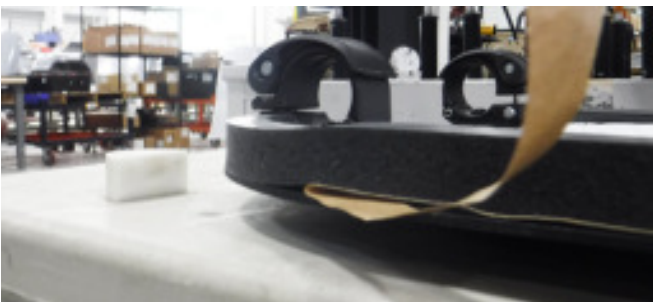
4. Install #1 and #8 between windshield assembly step and lower side ROPS clamp.



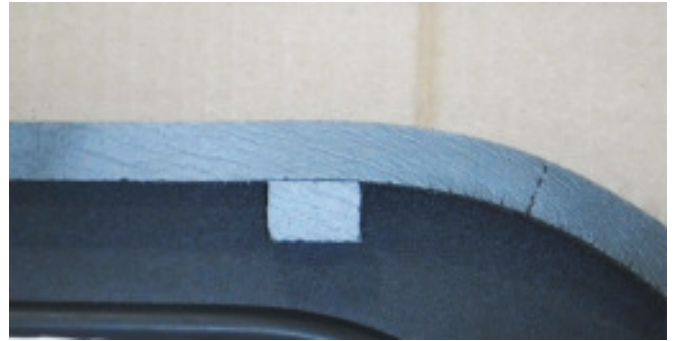
5. Install #2 and #7 between upper and lower side ROPS clamps.



6. Install #3 and #6 between upper side ROPS clamp and top center ROPS clamp.



7. Install #4 and #5 over optional soft cab enclosure slots.



8. Remove (4) M8 hex flange bolts, two from each side. Retain bolts for later use, discard windshield base.

NOTICE The following steps are best performed with two people.



9. Install windshield assembly with one person on each side. Align lower bolt holes with weld nuts on lower ROPS, then loosely install windshield assembly using (4) M8 hex flange bolts removed previously.





Install: Hard-Coated Polycarbonate Windshield

Part Number: S-0111AUA00071N

10. Secure (5) ROPS clamps to ROPS.



11. Torque (5) M6 and (4) M8 fasteners to specifications.

